

gorenje
Life Simplified

2015



**GORENJE
COOLING**

QUALITY AND TRADITION

Gorenje has been producing high-quality home appliances for over 60 years. It is committed to development of own technologies and to continuous improvement of its production processes. Drawing on Slovenian tradition and European values, Gorenje remains among the leading home appliance manufacturers in Europe. We are proud of every product that leaves our factories as we are aware that it was produced and tested to meet the stringent European environment protection standards.





REFRIGERATORS





GUARDIANS OF VITAMINS

Refrigerators

Although it is not used for cooking, Gorenje refrigerators are the hub of every kitchen. They are tasked with a simple mission – make sure your favourite food is always available. But Gorenje refrigerators can do much more. They feature smart technologies to mimic the conditions similar to those found in nature, which keeps the food fresh, tasty, and full of vital nutrients for longer. On the inside, they are thoughtfully organized to allow the user optimum view and plenty of space for storage of even larger amounts. On the outside, their superior design introduces a welcome visual accent to any home. Last but not least, they are notoriously charming with their silent and economical operation, and convincing durability.



IonAir with the MultiFlow 360° function

Ideal microclimate on every shelf

Advanced technology in Gorenje refrigerators emulates the natural microclimate to make sure the food stays fresh longer. Natural process of ionization prevents the development of up to 95% of harmful microorganisms, mould, and bacteria. Circulation of ionized air provides even supply of fresh air to maintain constant a steady temperature.



Natural microclimate inside refrigerator

Bad food storage



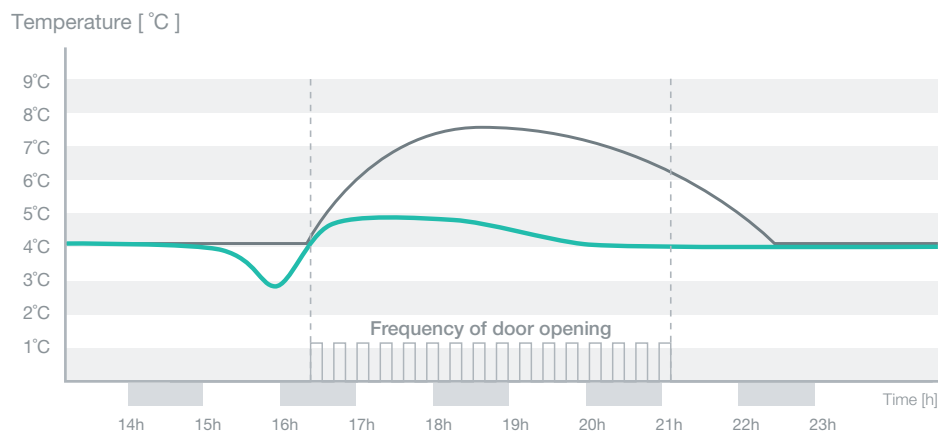


AdaptTech

A refrigerator that recognizes your habits

This smart system was devised to maintain the optimum temperature in the refrigerator regardless of how frequently you open the door. When the door is opened, the temperature suddenly rises and the food is exposed to a thermal shock which in turn causes it to perish sooner. The refrigerator

continuously monitors and analyzes the way you use it. Thus, it can predict when you will open the fridge door and just before you do, it decreases the temperature by 1 or 2 °C to make sure constant temperature is maintained and that the food stays fresh and full of nutrients.



— Line of temperature oscillations in a regular refrigerator

— Line of temperature oscillations in refrigerator with AdaptTech technology



NoFrost Plus

No more tedious defrosting

One of the best cooling systems in the market, installed in the freezer compartment, prevents the accumulation of ice and frost to keep the power consumption low, while in the refrigerator compartment, it maintains an ideal microclimate for fresh food. Circulation of ionized air prevents the food from drying out and retains its vitamins and minerals.



InverterCompressor

Steady, silent, and durable

InverterCompressor refrigerators are more silent, have a longer useful life and they are more economical compared to those with a conventional compressor. Whenever the temperature in the fridge interior rises as a result of door opening, the inverter compressor delivers rapid and effective cooling to prevent the food from spoiling.



The big party can start



ConvertActive refrigerator

The big party can start

The ConvertActive refrigerator only takes a simple press of a button to turn the freezer compartment into a refrigerator compartment, affording more space for storage of snacks or beverages.



CrispActive drawer with the VitaLight

The fruit and vegetables bin with the special VitaLight extends the freshness of the food. A spectrum of orange light slows down the natural process of ripening in the fruits and vegetables to retain vitamins and minerals.



FreshActive drawer

This drawer is ideal for storing meat, fish, and seafood. The temperature is a few degrees lower than in the remaining part of the refrigerator compartment, which considerably extends its freshness.



CrispZone drawer featuring HumidityControl Just like garden-fresh

CrispZone is one of the largest fruit and vegetables bins in the market. Low temperature and the option to adjust the humidity extend the freshness of your produce.



ZeroZone drawer Fresh as if straight from the sea

Keeping the temperature around 0 °C, this drawer is ideal for storing fresh or marinated meat, fish and seafood. It extends the freshness of delicate food and keeps its natural juiciness and nutrients.



XtremeFreeze drawer Freezing in a flash

When this function is activated, the food placed in a special drawer in the freezer compartment will be frozen in half the usual time. Rapid freezing at extremely low temperatures below -30 °C leads to formation of microcrystals that, unlike in case of slow freezing, do not damage the cellular structure of the food. The shock-approach to freezing thus preserves all nutrients and the flavour of the food. After 24 hours, the function is automatically switched off and the temperature in the drawer returns to the initial setting.



XXL SpaceBox Enough space to store a turkey

This freezer compartment drawer is the largest in the appliance and it is ideal for storing large items like a turkey, several pizzas, or even cakes.





SimpleSlide shelves

Height-adjustable shelves in the refrigerator door can be easily moved up or down to accommodate up to 5 kilograms of food of different shapes or sizes.



MultiBox

The multi-purpose bin with a cover in the refrigerator door can be used for storing cheese, onions, and other food with a pungent smell. It keeps the food fresh and protects it from drying, while the silicone cover can be used as an egg or ice tray.



LedLight

LED lighting in refrigerators provides excellent and highly efficient illumination. Its useful life is thirty times as long as that of conventional light bulbs, and it saves up to ten times as much power.



FastFreeze

The FastFreeze function freezes the food at -24°C to preserve most of the minerals in the food. After 48 hours, the function is switched off automatically and the freezer compartment temperature returns to the initial setting.



SuperCool

The intensive cooling function drops the refrigerator temperature to 3°C , which is lower than usual by nearly a half. Combined with large refrigerator compartment volume, this temperature is ideal for rapid cooling of food after major shopping trips. After six hours, the function is switched off automatically and the refrigerator compartment temperature returns to the initial setting.



SlotIn

Owing to the functionality of opening the refrigerator door at a right angle, all shelves and bins can be fully pulled out. This solution is ideal for refrigerators placed against a side wall, or adjacent to a countertop or another appliance.



A+++

All Gorenje refrigerators are highly energy-efficient. Excellent thermal insulation and door sealing, inverter compressor, and electronic or mechanical control efficiently reduce power consumption. Refrigerators with the A+++ energy efficiency rating use 60% less power than those in the A class.



Refrigerators with a height of 2m

These appliances are ideal for larger families. In addition to more space, they also feature all systems for maintaining a natural microclimate and steady temperature.



PullOut shelves

Shelves on extendable guides allow quick and easy access to food at the back of the fridge. The tempered glass shelves are highly durable and will carry up to 22 kilograms of food.



FrostLess

Improved insulation effectively reduces the accumulation of frost on the food and ice in the appliance interior. This means less tedious defrosting and a lower electricity bill.



EcoMode

In case of prolonged absence, the fridge can be set to operate in power-saving mode as the door is closed all the time.






SUPERIOR line

ConvertActive

(available only in 1.85 m models)

	NoFrost cooling
OPERATION	
Mechanic	
Electronic	
Electronic LED display behind doors	
Electronic LED display on doors	●
AdaptTech	
IonAir Dynamic Cooling	●
IonAir Multiflow 360°	●
ECO mode	●
SlotIn	●
EQUIPMENT	
Simple Slide	●
PullOut shelves	●
CrispZone with HumidityControl	●
FreshZone	
ZeroZone	●
MultiBox	●
XXL SpaceBox	●
Bottle holder	●
LED light	●
ALU profile shelves	●
ALU profile on drawers	●
ALU profile on door shelves	●
HANDLE TYPE	
Plastic	
Metal, short	
Metal, long	●
FREEZING SYSTEM	
Fast Freeze	●
Xtreme Freeze	●

	NoFrost cooling
OPERATION	
Mechanic	
Electronic	
Electronic LED display behind doors	
Electronic LED display on doors	●
AdaptTech	
IonAir Dynamic Cooling	●
IonAir Multiflow 360°	●
ECO mode	●
SlotIn	●
EQUIPMENT	
Simple Slide	●
PullOut shelves	●
CrispZone with HumidityControl	●
FreshActive 	●
ZeroZone	●
MultiBox	●
XXL SpaceBox	●
Bottle holder	●
LED light	●
ALU profile shelves	●
ALU profile on drawers	●
ALU profile on door shelves	●
HANDLE TYPE	
Plastic	
Metal, short	
Metal, long	●
FREEZING SYSTEM	
Fast Freeze	●
Xtreme Freeze	●



ADVANCED line



ESSENTIAL line

OPERATION	FrostLess cooling	NoFrost cooling
Mechanic		
Electronic		
Electronic LED display behind doors	●	●
Electronic LED display on doors		
AdaptTech	●	●
IonAir Dynamic Cooling	●	
IonAir Multiflow 360°		●
ECO mode		
SlotIn	●	●
EQUIPMENT		
SimpleSlide	●	●
PullOut shelves	●	●
CrispZone with HumidityControl	●	●
FreshZone	●	●
ZeroZone		
MultiBox	●	●
XXL SpaceBox	●	●
Bottleholder	●	●
LED light	●	●
ALU profile shelves	●	●
ALU profile on drawers	●	●
ALU profile on door shelves		
HANDLE TYPE		
Plastic		
Metal, short	●	●
Metal, long		
FREEZING SYSTEM		
FastFreeze	●	●
XtremeFreeze		

OPERATION	FrostLess cooling	NoFrost cooling
Mechanic	●	
Electronic		●
Electronic LED display behind doors		
Electronic LED display on doors		
AdaptTech		
IonAir Dynamic Cooling	●	
IonAir Multiflow 360°		●
ECO mode		●
SlotIn	●	●
EQUIPMENT		
SimpleSlide	●	●
PullOut shelves	●	●
CrispZone with HumidityControl	●	●
FreshZone	●	●
ZeroZone		
MultiBox		
XXL SpaceBox	●	●
Bottleholder	●	●
LED light	●	●
ALU profile shelves		
ALU profile on drawers		
ALU profile on door shelves		
HANDLE TYPE		
Plastic	●	
Metal, short		●
Metal, long		
FREEZING SYSTEM		
FastFreeze		●
XtremeFreeze		



SUPERIOR line



ADVANCED line

	Cooler
OPERATION	
Mechanic	
Electronic	
Electronic LED display behind doors	
Electronic LED display on doors	●
AdaptTech	●
IonAir Dynamic Cooling	●
ECO mode	●
SlotIn	●
SuperCool	●
EQUIPMENT	
Simple Slide	●
PullOut shelves	●
CrispZone with HumidityControl	●
CrispZone x 1	●
FreshZone x 2	●
MultiBox	●
Bottle holder	●
LED light	●
ALU profile shelves	●
ALU profile on drawers	●
ALU profile on door shelves	●
HANDLE TYPE	
Metal short	●

	Cooler
OPERATION	
Mechanic	
Electronic	
Electronic LED display behind doors	●
Electronic LED display on doors	
AdaptTech	●
IonAir Dynamic Cooling	●
ECO mode	
SlotIn	●
SuperCool	●
EQUIPMENT	
Simple Slide	●
PullOut shelves	●
CrispZone with HumidityControl	●
CrispZone x 1	●
FreshZone x 2	●
MultiBox	●
Bottle holder	●
LED light	●
ALU profile shelves	●
ALU profile on drawers	●
ALU profile on door shelves	
HANDLE TYPE	
Metal short	●

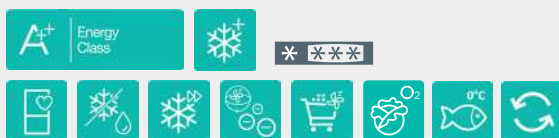


ESSENTIAL line

	Cooler
OPERATION	
Mechanic	●
Electronic	
Electronic LED display behind doors	
Electronic LED display on doors	
AdaptTech	
IonAir Dynamic Cooling	●
ECO mode	●
SlotIn	●
SuperCool	
EQUIPMENT	
Simple Slide	●
PullOut shelves	●
CrispZone with HumidityControl	●
CrispZone x 1	●
FreshZone x 2	●
MultiBox	
Bottle holder	●
LED light	●
ALU profile shelves	
ALU profile on drawers	
ALU profile on door shelves	
HANDLE TYPE	
Metal short	●



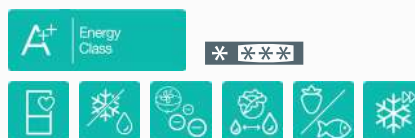
NRC 6192 TX
Freestanding fridge freezer



- Colour: Metallic grey
- Door opening: Reversible door opening
- Door material: Inox
- Climate class: ST, T



NRK 6192 JX
Freestanding fridge freezer



- Colour: Metallic grey
- Door opening: Reversible door opening
- Door material: Inox
- Climate class: SN, ST, N, T

Efficiency	- Number of compressors: 1 // Total gross/net volume: 329 / 307 l // Capacity of cooling compartment: gross/net: 231 / 222 l // Capacity of freezer compartment: gross/net: 98 / 85 l // Freezing capacity in 24 hours: 12 kg / 24h // Power cut safe time: 18 h	- Number of compressors: 1 // Total gross/net volume: 329 / 306 l // Capacity of cooling compartment: gross/net: 231 / 222 l // Capacity of freezer compartment: gross/net: 98 / 85 l // Freezing capacity in 24 hours: 5 kg / 24h // Power cut safe time: 18 h
Control	- Electronic control // Type of display: LED // Sound alarm for too long open door // White signal for high temperature in refrigerator	- Electronic control
Features	- ConvertActive: Convert freezer into refrigerator // CrispActive drawer with VitaLight with HumidityControl // IonAir: Ionizer in the fridge // AdaptTech cooling: Memorizing intelligent system // Multiflow 360°: Multi 3D air blowing // Slot-in: possibility to put the appliance into the kitchen niche 60 cm // NoFrost Plus // SuperCool // FastFreeze // Saving programme EcoMode	- IonAir: Ionizer in the fridge // AdaptTech cooling: Memorizing intelligent system // Multiflow 360°: Multi 3D air blowing // Slot-in: possibility to put the appliance into the kitchen niche 60 cm // NoFrost Plus // FastFreeze
Equipment of refrigerator	- Egg/Ice bin: 1 x 7 // 2 SimpleSlide height adjustable door shelves // Type of interior light: LED // 4 Glass shelves // Bottle holder // Bottle shelf with fixed trap // MultiBox for butter and cheese // CrispActive drawer with VitaLight // ZeroZone drawer //	- Egg/Ice bin: 1 x 7 // 2 SimpleSlide height adjustable door shelves // Type of interior light: LED // 4 Glass shelves // Bottle holder // Bottle shelf with fixed trap // MultiBox for butter and cheese // FreshZone drawer // CrispZone with HumidityControl: big vegetable drawer with humidity regulation
Equipment of freezer	- XXL SpaceBox drawer // XtremeFreeze: very intensive freezing in the upper freezer drawer // 3 drawers for freezing	- XXL SpaceBox drawer // 3 drawers for freezing
Technical data	- Energy class: A++ - Energy consumption kWh/24h: 0,643 kWh - Energy consumption kWh/year: 235 kWh - Level of noise (max.): 42 dB(A)re 1 pW - Product dimensions (HxWxD): 185 x 60 x 64 cm	- Energy class: A++ - Energy consumption kWh/24h: 0,643 kWh - Energy consumption kWh/year: 235 kWh - Level of noise (max.): 42 dB(A)re 1 pW - Product dimensions (HxWxD): 185 x 60 x 64 cm

www.vosoughishop.com

دفتر مرکزی: مشهد، بین قرنی ۳۱ و ۳۳

تلفن: ۰۵۱ - ۳۷۱۳۳۰۰۰