

Dealer information

Novelties 2017

www.blanco-germany.com

BLANCO
GERMANY

Innovation & Inspiration.

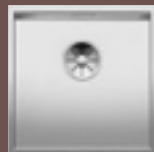
www.vosoughishop.com

The material innovation Durinox™ continues on its path to success. Previously only available for worktops, the SteelArt Hightech facility has further developed the resistant stainless steel surface Durinox™ and adapted it for bowls. It adds elegance and hardness to no fewer than four undermount models in the ZEROX family. The exceptionally homogeneous surface structure with its velvety-matt look radiates a timeless calm. The high load-bearing capacity and pleasantly warm feel go perfectly together.

Hardened using modern shot-blasting technology, ZEROX bowls are particularly resistant to scratches. The eye-catching rectangular bowl geometry and zero radius design of BLANCO ZEROX-U gain in functionality and expressiveness. Elegance at its loveliest – thanks also to the C-overflow™ and the perfectly integrated InFino™ drain system.



BLANCO ZEROX 340-U
Stainless steel Durinox™



BLANCO ZEROX 400-U
Stainless steel Durinox™



BLANCO ZEROX 500-U
Stainless steel Durinox™



BLANCO ZEROX 700-U
Stainless steel Durinox™



Hard and soft at the same time.
BLANCO ZEROX – now also in Durinox™.

Bowl: BLANCO ZEROX 700-U, stainless steel Durinox™
Mixer tap: BLANCO LINEE-S, chrome



The new ZEROX-U models by the SteelArt High Tech facility combine functionality with expressiveness.



The zero radius design acquires further elegance from the BLANCO Durinox™ surface.



No matter how tough the task, the BLANCO Durinox™ surface remains highly resistant to scratches.

Brilliant: the three-tier sink system.

The new series BLANCO ETAGON in stainless steel and SILGRANIT™.



Bowl: BLANCO ETAGON 500-IF/A, stainless steel satin polish
Mixer tap: BLANCO PANERA-S, stainless steel brushed finish



Bowl: BLANCO ETAGON 500-U, SILGRANIT™ PuraDur™
Mixer tap: BLANCO LINEE-S, SILGRANIT™ look, alu metallic/chrome

The three-tier sink system: added comfort thanks to the unique functionality. BLANCO ETAGON 500 adds a further functional level to the single bowl. The brand new system concept has all the versatility of the sink centre, yet requires little space. The integrated step in conjunction with the specially developed ETAGON runners facilitates working on three levels of the modern linear bowl.

Placed in the centre, the runners will accommodate items such as pans and steam cooking containers. Vegetables can be worked into the container from the chopping board placed above while other items soak in the bowl. Baking trays are easy to clean in the large single bowl.

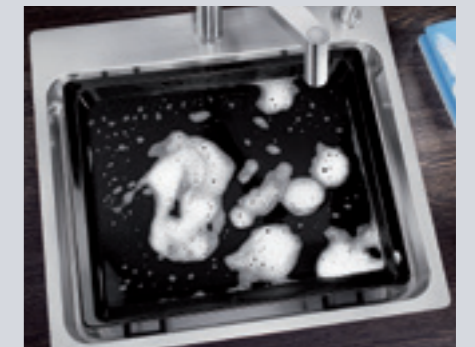
Undermount bowls look just as good as the additional installation options with the IF flat rim and IF/A with the integrated tap ledge, both suitable for flushmount or lay-on installation. The version in SILGRANIT™ PuraDur™ is available in all ten colours.



One bowl, three levels: BLANCO ETAGON has all the functionality of a sink centre, but requires little space.



The ETAGON runners that are included in the delivery fit perfectly on the functions level. They are non-slip and tilt-proof.



Soaking and cleaning baking trays is easy in the roomy single bowl.



Neat and tidy: sponge and dishcloth are always tidied away.

BLANCO ETAGON 500



BLANCO ETAGON 500-IF
Stainless steel



BLANCO ETAGON 500-U
Stainless steel



BLANCO ETAGON 500-IF/A
Stainless steel

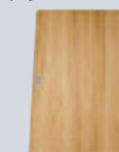


BLANCO ETAGON 500-U
SILGRANIT™ PuraDur™

Accessories included in scope of supply



ETAGON runners, brushed stainless steel



Ash compound chopping board



Glass cutting board*

* Glass cutting board not suitable for IF/A version

The art of contrasts.
BLANCO ARTAGO.



Bowl: BLANCO ARTAGO 6 IF/A SteelFrame, SILGRANIT™ PuraDur™, anthracite
Mixer tap: BLANCO LINEE-S, stainless steel satin matt

Pure architecture for modern kitchen design.

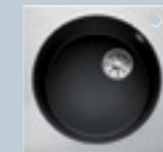
Paring down to the essential makes a clear statement. BLANCO ARTAGO fascinates with the contrasts between the shapes. The round bowl is perfectly complemented by the square outer contour. This new line is available in two attractive versions.

BLANCO ARTAGO appeals with a “crest of a wave” transition to the bowl and is available in every colour of the CombiColours palette with the matching mixer tap.

BLANCO ARTAGO 6 IF/A fascinates with its material mix of stainless steel and SILGRANIT™ PuraDur™. The frame is brushed, which gives it an elegant appearance. The model is available in the programme in the colours anthracite and white.

Both models feature the round concealed C-overflow™ and the InFino™ waste system. The elements are perfectly integrated, optically appealing, hygienic and easy to look after. By rotating the bowl by 90°, the mixer tap can be installed at the rear both on the right and left.

BLANCO ARTAGO



BLANCO ARTAGO 6 IF/A SteelFrame



BLANCO ARTAGO 6



Exciting material mix of SILGRANIT™ sink with stainless steel frame for the BLANCO ARTAGO 6 IF/A.



BLANCO ARTAGO 6: Elegant “crest of a wave” outer contour of the bowl.



Pure elegance in white: BLANCO ARTAGO 6 with BLANCO LINEE-S, silgranit white

The third generation of the BLANCO AXial concept offers more.

More capacity, more attractive accessories, more variety.

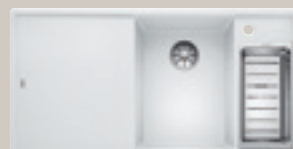
The success story of the AXial sinks continues. The uniquely ergonomic sink centre has been further developed. Flowing work sequences along two axes have never been as variable as they are with the optimised AXial concept.

BLANCO AXIA III has no fewer than five new features: a larger bowl capacity, better utilisation of the available space, innovative accessories, flatter rim design, and the new InFino™ drain system. Even customers who want an extra-large bowl capacity will find just what they want in the newly created version BLANCO AXIA III XL 6 S.

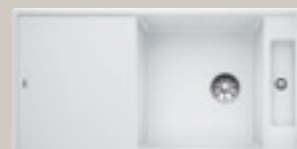
The BLANCO AXIS III series continues to delight with the Extend bowl with accentuated base contour and the large, level drainer. The C-overflow™, innovative InFino™ drain system and the white glass cutting board provide even greater ease in care and add elegance.

You will find more model-based accessories in our complete range.

BLANCO AXIA III SILGRANIT™ PuraDur™



BLANCO AXIA III 6 S



BLANCO AXIA III XL 6 S

BLANCO AXIA III accessories



Ash compound bridging chopping board



Glass cutting board white



Multifunctional colander stainless steel

Uniquely ergonomic.
BLANCO AXial concept now perfected.



Sink: BLANCO AXIA III 6 S, SILGRANIT™ PuraDur™, white
Mixer tap: BLANCO LINEE-S, SILGRANIT™ look, silgranit white/chrome

BLANCO AXIS III Stainless steel



BLANCO AXIS III 45 S-IF



BLANCO AXIS III 5 S-IF



BLANCO AXIS III 6 S-IF / Edition / Steamer Edition

BLANCO AXIS III accessories



Bridging chopping board in solid walnut



Glass cutting board white



Multifunctional colander stainless steel



Perfect interplay between BLANCO AXIS III 6 S-IF and the practical accessories.



The innovative ash compound bridging chopping board can be moved freely.



Generous main bowl with the innovative InFino™ drain system.

Pure elegance – large volume.
SILGRANIT™ series BLANCO PLEON.



Sink: BLANCO PLEON 6 Split,
SILGRANIT™ PuraDur™, rock grey
Mixer tap: BLANCO CARENA-S,
SILGRANIT look, rock grey/chrome

Lots of functions in a timeless look.

BLANCO PLEON, the new bowl line, unites the trend for simple elegance with intelligent design solutions. Clear shapes and generous coloured SILGRANIT™ areas are the perfect finish to the modern kitchen world. The C-overflow™ and innovative InFino™ drain system complete this bowl series.

Thanks to their exceptional depth, the new XL bowls achieve the maximum capacity.

Extremely clever: the Split concept

BLANCO PLEON 6 Split combines the main and additional bowl with a lowered bowl divider. The result is three functional areas: the main or additional bowl filled to the height of the divider, and the XL bowl filled to the maximum of the overflow.

Various work sequences can be carried out neatly and simultaneously with BLANCO PLEON 6 Split.



BLANCO PLEON 6: bowl at its best.



With its simple elegance, BLANCO PLEON 5 is absolutely on trend.



The Split concept: the main and additional bowls are separated by a lowered divider – so they can be used independently of each other.



The bowl division saves water and space.



BLANCO PLEON 6 Split facilitates working in three areas at the same time.

BLANCO PLEON



BLANCO PLEON 5



BLANCO PLEON 6



BLANCO PLEON 6 Split

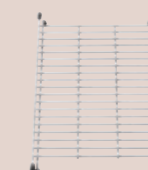
Accessories



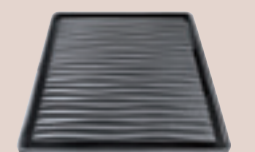
Ash compound chopping board



Multifunctional colander stainless steel



Floating grid



Drainer in black plastic

Clear form plus ergonomics.

BLANCO LANTOS-IF Centric stainless steel sink.



Sink: BLANCO LANTOS 6 S-IF Centric, stainless steel
Mixer tap: BLANCO NEA-S, chrome



Straight shape with generous working areas
BLANCO LEMIS.

Stainless steel classic now with even more elegance and ergonomics.

Functional and attractive additions to the popular LANTOS sink family. The central ergonomic position of the main bowl adds to the freedom of movement.

The large drainer and additional bowl on the side with the perforated stainless steel colander optimise the work sequences. The innovative SmartCut chopping board in compound technology is the perfect addition.

The elegantly modern design of the flushmounted IF rim adds a permanently refined touch to the popular LANTOS sink centre series.



BLANCO LANTOS-IF can be installed in reverse.



The perforated stainless steel colander for the additional bowl ensures simple work processes and great flexibility.

BLANCO LANTOS



BLANCO LANTOS 6 S-IF Centric

Accessories



Multifunctional colander stainless steel



SmartCut-chopping board

Classic yet clear in design at the same time – this new product line in stainless steel. All BLANCO LEMIS models have a large main bowl and a generous drainer (except BLANCO LEMIS 8). This makes rinsing and draining large pots and pans easy and uncomplicated. The BLANCO LEMIS series is reversible, and is easy to

install from above. Its shape and the elegant, ultra-flat rim blend smoothly with many popular kitchen styles.

To match the current trend for XL bowls, BLANCO also offers a version with an extra-large bowl for even more freedom of movement and space in the sink.



BLANCO LEMIS practical down to the finest detail – with residue bowl and integrated multifunctional colander.

BLANCO LEMIS



BLANCO LEMIS 45 S-IF



BLANCO LEMIS 6 S-IF



BLANCO LEMIS 8-IF



BLANCO LEMIS XL 6 S-IF



BLANCO LEMIS 8 S-IF

Timeless aesthetics with modern functions.
 BLANCO ZENAR – now also in the compact version.



Sink: BLANCO ZENAR XL 6 S Compact, nutmeg
 Mixer tap: BLANCO FELISA-S, SILGRANIT™ look, nutmeg

Plenty of comfort doesn't need much space.

BLANCO ZENAR XL 6 S Compact combines a high level of functionality with timeless, beautiful design. The compact outer dimension surrounds a particularly large bowl with a shortened drainer. The practical chopping boards can be moved freely over the entire length of the sink. The high-quality features of BLANCO ZENAR XL 6 S Compact include the C-overflow™ and the innovative drain system InFino™.



Movable chopping boards are the perfect fit.

BLANCO ZENAR



BLANCO ZENAR XL 6 S Compact

Accessories



Ash compound chopping board



Glass cutting board in black

Exotic meets harmony.
 Nutmeg, our new colour.



A gentle lightness delights the senses.

Nutmeg, the new CombiColours shade, is a veritable taste experience for the eye. The warm shade of brown introduces the mild spiciness of the Caribbean into the modern kitchen.

elegant woods such as oak and wenge. Nutmeg also develops its full exotic feel-good flair in combination with granite or artificial stone.

SILGRANIT™ PuraDur™ sinks in nutmeg follow the latest fashion trends. They harmonise perfectly with a soft beige, muted white and

The sink models in the catalogue programme are now also all available in nutmeg – along with the matching mixer taps in SILGRANIT™ look in nutmeg, of course.

CombiColours

BLANCO SILGRANIT™ PuraDur™ Colours



Nutmeg, the new CombiColours shade, is absolutely on trend with modern kitchen design.

Design with personality.
BLANCO IDENTO ceramic sinks.



Sink: BLANCO IDENTO XL 6 S,
ceramic PuraPlus™, crystal white
Mixer tap: BLANCO LINUS-S,
ceramic look, crystal white

Puristic design at its loveliest.

The BLANCO IDENTO series delights with its extensive lines and aesthetics. It appeals with its clearly defined functional areas and generous bowls with tight radii. The natural material ceramic enhances the strong design. The exceptionally flat rim creates a harmonious transition to the worktop.

Available in three versions, the BLANCO IDENTO range of designs adds expression to individual requests, and is also available in a flushmount option.

The ultra-large drainer of BLANCO IDENTO 45 S opens up a very large storage and working area. The XL bowl of BLANCO IDENTO XL 6 S offers a generous capacity, while BLANCO IDENTO 6 S with the spacious main and practical additional bowls provides even greater comfort. The slender divider enhances the harmonious overall appearance of the sink centre.

BLANCO IDENTO



BLANCO IDENTO 45 S



BLANCO IDENTO 45 S-F



BLANCO IDENTO 6 S



BLANCO IDENTO 6 S-F



BLANCO IDENTO XL 6 S



BLANCO IDENTO XL 6 S-F



BLANCO IDENTO XL 6 S offers a spacious main bowl.



BLANCO IDENTO is also available in a flushmount option.

BLANCO Keramik-Farben



The new eye-catcher
in the kitchen sink.
BLANCO InFino™ drain system.



The perfection of the sink centre starts at its base.

BLANCO InFino™ is the elegant way to create excitement at the sink. Thanks to the clear, contemporary design, the new drain concept adapts perfectly to the bowl topography. The result is a generous, calm overall effect that is pleasing to the eye and enhances the sink centre.

BLANCO InFino™ – the perfection of the sink centre:

- Elegant puristic design
- Smart manual handling concept, optionally with remote control
- Integration almost without rims
- Available with all BLANCO sink materials
- Pre-defined, always precisely centred position of the strainer
- Gap-free for easy cleaning and hygiene
- Service-friendly construction with fast valve installation



The smart handling concept.

Operation of InFino™ is intuitive and logical. A gentle turn on the strainer opens or closes the drain – with virtually no friction, inaudibly, precisely.



Whether open or closed, the InFino™ strainer remains at the same height. Objects are positioned safely without tipping.



Restrained elegance and puristic: The BLANCO InFino™ drain system gives a modern appearance not only to bowls made of stainless steel but also of SILGRANIT™ and ceramic.



Three lines – countless possibilities.
BLANCO drain remote controls.



The new freedom in choosing the perfect drain remote control. Optional features have never been more exciting. Thanks to the many possibilities that the BLANCO remote control range offers, sink centres can now be designed to be even more individual and unique.

ADVANCED drain remote controls.



BLANCO SensorControl Blue

is the unique combination of technology and elegance, for a sink centre that leaves nothing to be desired. With precise electronic control, the

drain opens and closes in response to a gentle touch, and does so reliably, controllably and under all conditions at the workplace.

Available from June 2017



BLANCO PushControl

is control at the press of a button. Thanks to the intuitive pushing motion, the cleverly thought-out mechanics control the drain easily, precisely

and reliably. The 3 mm-high flat design integrates itself unobtrusively yet at the same time strikingly into any sink set-up. The high-quality, elegant model enhances any kitchen by adding a valuable, functional touch.

Available from April 2017

DESIGN drain remote controls.



DESIGN remote controls

are the perfect match for mixer taps that are an eye-catching feature in any kitchen. As a unit, developed with superb Design mixer taps, they

tell a story of quality, harmony, a feeling for life and a love of special aspirations. Delivers perfect harmony – design down to the smallest detail.

COMFORT drain remote controls.



The COMFORT remote controls

are a plus for any sink centre. They provide reliable control of the drain from the outside. That's modern convenience for all work at the sink

centre, with a wide range of surface options and two reliable operating concepts: Turn or pull – it's entirely up to you.



Precision in stainless steel.
Design mixer tap BLANCO PANERA-S.

Mixer tap: BLANCO PANERA-S, brushed stainless steel



Window clear in just one move.
BLANCO LARESSA-F window mixer tap.

Mixer tap: BLANCO LARESSA-F, chrome, lever on right

Stainless steel meets design.

The BLANCO PANERA-S mixer tap delights with the precision of its manufacture and ease of use. The interplay between harmonious radii and eye-catching lines adds an unmistakable accent in the modern kitchen.

The ergonomic control concept with the pull-out spray is well planned for perfect comfort. A touch on the optically perfectly integrated diverter is all it takes to change from a normal jet to spray jet.



BLANCO PANERA-S, brushed stainless steel



The pull-out spray offers the maximum in manageability.



Optimum ergonomics: change from normal to spray jet at the touch of a button.



The diverter for changing the jet type is optically perfectly integrated.

Folding technology for added comfort at the window. BLANCO LARESSA-F lies flat in seconds. The modern mixer tap for window installation folds down and lowers into the bowl.

Result: windows open quickly and easily. The cushioned folding process and audible click as it slots into the upper and lower fitting are key features of this mixer tap.

Particularly practical: the control lever on the side can also be moved into a horizontal position, leaving it only 6.5 cm high. Available with the lever on the left or right to perfectly match the bowl position.



The BLANCO LARESSA-F tilts forwards with just one movement.



Thanks to the optimum installation height, the whole spout can be lowered into the bowl to open the window with ease.

BLANCO LARESSA-F



BLANCO LARESSA-F chrome, lever on right



BLANCO LARESSA-F chrome, lever on left

The perfect frame
for high flexibility.
BLANCO FLEXON II waste system.



Waste system:
BLANCO FLEXON II XL 60/3

Innovative frame design, hygienic and flexible. BLANCO FLEXON II surrounds waste bins in different sizes with a functional frame. Made of high-quality black plastic and elegantly anodised aluminium, this modern waste system is not only extremely practical, but also chic.

For new installations and retrofitting into existing drawer cabinets, BLANCO FLEXON II can quickly and easily be fitted to any standard pull-out cabinet.

The extension range of designs adapts perfectly to a wide range of base units from 30 to 90 cm width.

The frame is simply placed in the drawer; the bins are easily accessible, and are complemented by the strong pull-out shelf base. Because the bins are suspended on the frame, the whole system is easy to clean.

A wide range of small removable bins and lids are ideal for collecting organic/food waste. The funnel rim of BLANCO FLEXON II tilts to the inside to prevent waste materials from sticking to it.



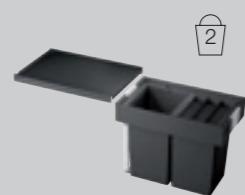
High-quality waste system for drawer cabinets with base attachment in anodised aluminium.



System with all-round frame and in matching colours.



FLEXON II 30/1
30 cm Base unit width



FLEXON II 30/2
30 cm Base unit width



FLEXON II 45/2
45 cm Base unit width



FLEXON II 50/2
50 cm Base unit width



FLEXON II 50/3
50 cm Base unit width



FLEXON II 60/2
60 cm Base unit width



FLEXON II 60/3
60 cm Base unit width



FLEXON II XL 60/3
60 cm Base unit width



FLEXON II 60/4
60 cm Base unit width



FLEXON II 90/4
90 cm Base unit width



Waste system:
BLANCO FLEXON II XL 60/2

www.blanco-germany.com

BLANCO
GERMANY

www.vosoughishop.com

دفتر مرکزی : مشهد، بین قرنی ۳۱ و ۳۳
تلفن : ۳۷۱۳ ۳۰۰۰ - ۵۱