

Raspberry pink  
RB 60299 OP



Juicy orange  
RB 60299 OO



Burgundy  
RB 60299 OR



Lime green  
RB 60299 OG



White  
RB 60299 OW



Black  
RB 60299 OBK



Fiery red  
RB 60299 ORD



Cream  
RB 60299 OC



Royal coffee  
RB 60299 OCO



Silver  
RB 60299 OX



Baby blue  
RB 60299 OBL



.....  
**RB 60299**  
.....

**Gorenje Retro Edition**  
.....

Freestanding Refrigerator  
.....

SuperCool

FreezeBox

DynamicCooling  
.....

288 l Gross Volume

1,52 m

A++  
.....







## *Life is colours. Colours are life.*

Colours are one of the most powerful means of expression. When designing our homes, colours are true storytellers. They infuse energy, they communicate values, they explain emotions. The times when one could choose from appliances in just black or white are by now just a grey memory. Gorenje colour selection offers a wide range of colourful options for cooling, washing and drying. All appliances are quality made, offer an inspiring user experience and are made to save time, energy and water. And on top of that, they are dressed in life's most beautiful colours.

# COOLING

The refrigerator is the centre of any kitchen. When this loyal friend comes in colours it also becomes an enjoyable visual focal point. That is why Gorenje refrigerators offer such a wide range of colours to choose from, all packed into inspiring pieces of design. While playful on the outside, on the inside they feature a powerful mix of technologies that guarantee optimal conditions for keeping food fresh and healthy.





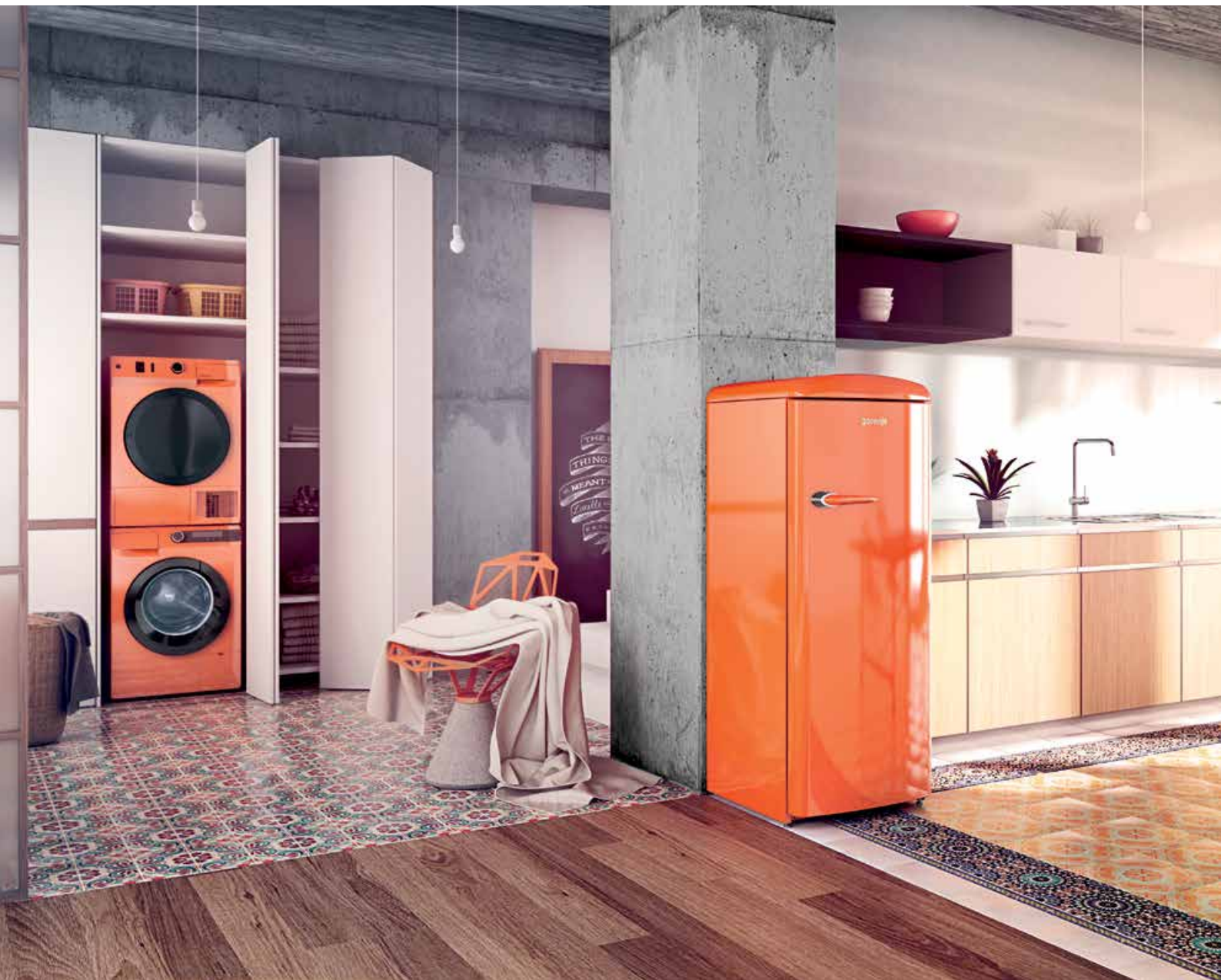


## RETRO EDITION

### COLD BECOMES CHARMINGLY COOL

Underneath the timeless shape there is an inspiringly practical cooling appliance. A combination of vintage design and a long list of passionate colours to choose from make this refrigerator a welcome emphasis in your kitchen interior. As a design item it can also be easily placed in the living room, which comes in especially handy in smaller urban nests, but also in modern open-space living environments. Each Retro refrigerator boasts optimal space usage, an elegant character and all the helpful features one would expect from a true charmer. Whether it is funky orange, nostalgic brown, seductive red or any other colourful personality, these modern icons are an instant hit wherever they pop up.





# UNITED SHADES OF COOL

SELECTION OF GORENJE  
COLOUR EDITION

2015

**gorenje**  
*Life Simplified*





Cream  
RK 60359 OC

Black  
RK 60359 OBK

Royal coffee  
RK 60359 OCO

Burgundy  
RK 60359 OR

Silver  
RK 60359 OX

White  
RK 60359 OW



Cream  
RF 60309 OC

Black  
RF 60309 OBK

Royal coffee  
RF 60309 OCO

Burgundy  
RF 60309 OR

Silver  
RF 60309 OX

White  
RF 60309 OW



**RK 60359**

**Gorenje Retro Edition**

Freestanding Refrigerator with  
bottom freezer

SuperCool  
Large crisper drawer  
DynamicCooling

342 l Gross Volume

1,88 m

A++

**RF 60309**

**Gorenje Retro Edition**

Freestanding Refrigerator with  
top freezer

SuperCool  
DynamicCooling  
FastFreeze

296 l Gross Volume

1,73 m

A++





# ION GENERATION

## DREAM TEAM

This family of refrigerators was designed to be a perfect match for the modern, active lifestyle. Besides being extremely energy efficient, they namely introduce a long list of innovative solutions that create the optimal microclimate, making fresh, tasty and healthy food available anytime. The Ion Air feature slows down food degeneration processes, while MultiFlow 360° distributes the air ideally throughout the whole of the interior. The spacious inside is adaptable to many packages of food, while the ergonomically designed outside proudly shines in a variety of possible colours.

Silver  
NRK 6192 JX



Fiery red  
NRK 6192 JRD



Champagne  
NRK 6192 JC



Bordeaux  
NRK 6192 JR



Black  
NRK 6192 JBK



Silver  
RK 6193 KX



Fiery red  
RK 6193 KRD



Champagne  
RK 6193 KC



Bordeaux  
RK 6193 KR



Black  
RK 6193 KBK



Juicy Orange  
RK 6192 EO



**NRK 6192**

**Ion Generation ADVANCED**

NoFrost Plus Fridge Freezer

IonAir with DynamicCooling  
AdaptTech  
CrispZone with  
HumidityControl

329 | Gross Volume

1,85 m

A++

**RK 6192**

**Ion Generation ESSENTIAL**

FrostLess Fridge Freezer

FreshZone drawer  
CrispZone with  
HumidityControl

326 | Gross Volume

1,85 m

A++

**RK 6193**

**Ion Generation ADVANCED**

FrostLess Fridge Freezer

IonAir with DynamicCooling  
AdaptTech  
CrispZone with  
HumidityControl

326 | Gross Volume

1,85 m

A+++



For other colours see page 22

# WASHING & DRYING

Doing laundry is one of those things that tends to get messy and always takes more time than sensible. Gorenje washing and drying machines act like understanding personal assistants that can take all of that away and efficiently handle all laundry-related business. They also keep the environment in mind and operate extremely efficiently. Handling the complicated daily routines of modern families is their speciality since the smart technology enables them to work while you are sleeping or just living your life.

And yes, Gorenje washing and drying machines speak in colours – bright, beautiful colours.





gorenje

gorenje

120

gorenje

gorenje

gorenje

Juicy Orange  
W 8543 LO



# SENSOCARE WASHERS

## TECHNOLOGY WITH A HEART

All fabric demands special treatment and a unique combination of the water level, washing detergent, drum rotation and time. SencoCare technology takes on this challenge with gusto. This generation of washing machines provides excellent laundry care even when washing at only 30°. Whether they are white, black or in colour, these skilful washing specialists take care of it all. They simplify laundry-related tasks and take away all the stress through a list of pre-set programmes and variety of helpful features. Sencocare washing means that even an ultra-sensitive, ultra-expensive dress will become just another routine operation.

.....  
**W 8543**

.....  
**Sencocare Washing Machine**

.....  
Colour Edition

.....  
SensoCare

.....  
GreenCare

.....  
SpaDrum

.....  
1400 rpm

.....  
8kg

.....  
A+++  
.....



Black  
W 8543 LB



Silver  
W 8543 LA



Fiery Red  
W 8543 LR



Juicy Orange  
D 8565 NO

# SENSOCARE TUMBLE DRYERS

## SMOOTH OPERATOR

On the outside, Gorenje dryers are all emotional: they are superbly designed and come in many lively colours. But, on the inside, Gorenje dryers are all rational. They are extremely energy efficient, they actively prevent creases and notably soften fabrics. GentleCare will treat even the most sensitive fabrics respectfully by drying them at no more than 40 °C. Sensocare dryers also make ironing and folding easier or even unnecessary as they sense and automatically adjust the moisture still left in clothes. And all of this happens in almost silence.

D 8565

SensoCare Tumble Dryer

Colour Edition

IonTech

TwinAir

Drum Illumination

Sensor IQ

8kg

A++

Black  
D 8565 NBSilver  
D 8565 NAFiery Red  
D 8565 NR



Juicy orange  
RB 60299 OO



Lime green  
RB 60299 OGR



Raspberry Pink  
RB 60299 OP



Cream  
RB 60299 OC  
RB 60299 OC-L



Burgundy  
RB 60299 OR RB  
60299 OR-L



Baby Blue  
RB 60299 OBL  
RB 60299 OBL-L



Silver  
RB 60299 OX



Black  
RB 60299 OBK  
RB 60299 OBK-L



White  
RB 60299 OW  
RB 60299 OW-L



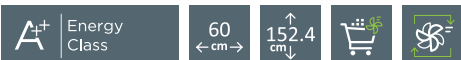
Fiery red  
RB 60299 ORD  
RB 60299 ORD-L



Royal coffee  
RB 60299 OCO

## RB 60299

### Freestanding fridge



#### Colour

Juicy Orange // Lime Green // Raspberry Pink // Cream // Burgundy // Baby Blue // Silver // Black // White // Fiery red

Door opening: Right door opening - Left door opening // Climate class: **SN, ST, N, T**

#### Efficiency

1 compressor // Total gross/net volume: **288 / 281 l** // Capacity of cooling compartment: gross/net: **262 / 255 l** // Capacity of freezer compartment: gross/net: **26 / 26 l** // Freezing capacity in 24 hours: **2 kg / 24h** // Power cut safe time: **18 h**

#### Control

Mechanic control

#### Features

Fan-assisted cooling in fridge // SuperCool

#### Equipment of refrigerator

Decorative cover // Type of interior light: LED // 4 glass shelves // Bottle holder // Dairy shelf // Bottle shelf with fixed trap // Flexible egg tray (12x) // Deep door two-partition bottle shelf // large crisper drawer for vegetables and fruit

#### Equipment of freezer

1 compartment with door for frozen food // 1 ice tray

#### Technical data

Energy consumption kWh/24h: **0,536 kWh** // Energy consumption kWh/year: **196 kWh** // Level of noise (max.): **42 dB(A)re 1 pW**  
Product dimensions (HxWxD): **152,4 × 60 × 64 cm**





Cream  
RF 60309 OC  
RF 60309 OC-L



Burgundy  
RF 60309 OR  
RF 60309 OR-L



Silver  
RF 60309 OX



Black  
RF 60309 OBK  
RF 60309 OBK-L



White  
RF 60309 OW  
RF 60309 OW-L



Royal coffee  
RF 60309 OCO

## RF 60309

### Freestanding fridge freezer

5  
YEAR  
WARRANTY



\* \*\* \*\* \*

#### Colour

Cream // Burgundy // Silver // Black // White // Royal coffee

Door opening: Right door opening - Left door opening // Climate class: **SN, ST, N, T**

#### Efficiency

1 compressor // Total gross/net volume: **296 / 294 l** // Capacity of cooling compartment: gross/net: **231 / 229 l** // Capacity of freezer compartment: gross/net: **65 / 65 l** // Freezing capacity in 24 hours: **4,5 kg / 24h** // Power cut safe time: **22 h**

#### Control

Mechanic control

#### Features

Fan-assisted cooling in fridge // SuperCool // FastFreeze

#### Equipment of refrigerator

Decorative cover // Type of interior light: LED // 4 glass shelves // Bottle holder // Dairy shelf // Bottle shelf with fixed trap // Flexible egg tray (12x) // Deep door two-partition bottle shelf // large crisper drawer for vegetables and fruit

#### Equipment of freezer

1 wire shelf in freezer department // 1 compartment with door for frozen food // 1 ice tray

#### Technical data

Energy consumption kWh/24h: **0,583 kWh** // Energy consumption kWh/year: **213 kWh** // Level of noise (max.): **39 dB(A)re 1 pW**  
Product dimensions (HxWxD): **173,4 x 60 x 64 cm**



Burgundy  
RK 60359 OR  
RK 60359 OR-L



White  
RK 60359 OW  
RK 60359 OW-L



Cream  
RK 60359 OC  
RK 60359 OC-L



Royal Coffee  
RK 60359 OCO



Silver  
RK 60359 OX



Black  
RK 60359 OBK  
RK 60359 OBK-L

## RK 60359

### Freestanding fridge freezer



#### Colour

Burgundy // White // Cream // Royal Coffee // Silver // Black

Door opening: Right door opening - Left door opening // Climate class: **SN, ST, N, T**

#### Efficiency

1 compressor // Total gross/net volume: **342 / 321 l** // Capacity of cooling compartment: gross/net: **231 / 229 l** // Capacity of freezer compartment: gross/net: **111 / 92 l** // Freezing capacity in 24 hours: **4 kg / 24h** // Power cut safe time: **21 h**

#### Control

Mechanic control

#### Features

Fan-assisted cooling in fridge // SuperCool

#### Equipment of refrigerator

Decorative cover // Type of interior light: LED // 4 glass shelves // Bottle holder // Dairy shelf // Bottle shelf with fixed trap // Flexible egg tray (12x) // Deep door two-partition bottle shelf // Large crisper drawer for vegetables and fruit

#### Equipment of freezer

2 storage drawers // 1 drawer for freezing // 1 ice tray

#### Technical data

Energy consumption kWh/24h: **0,628 kWh** // Energy consumption kWh/year: **229 kWh** // Level of noise (max.): **41 dB(A)re 1 pW**  
Product dimensions (HxWxD): **188,7 x 60 x 64 cm**



Silver  
NRK 6192 JX



Champagne  
NRK 6192 JC



Fiery red  
NRK 6192 JRD



Bordeaux  
NRK 6192 JR



Black  
NRK 6192 JBK

## NRK 6192 J

### Freestanding fridge freezer

5  
YEAR  
WARRANTY



\* \*\* \*\* \*

#### Colour

Silver // Champagne // Fiery red // Bordeaux // Black

Door opening: Reversible door opening // Climate class: **SN, ST, N, T**

#### Efficiency

1 compressor // Total gross/net volume: **329 / 306 l** // Capacity of cooling compartment: gross/net: **231 / 221 l** // Capacity of freezer compartment: gross/net: **98 / 85 l** // Freezing capacity in 24 hours: **5 kg / 24h** // Power cut safe time: **18 h**

#### Control

Electronic control

#### Features

IonAir: Ionizer in the fridge // AdaptTech cooling: Memorizing intelligent system // Multiflow 360°: Multi 3D air blowing // Slot-in: possibility to put the appliance into the kitchen niche 60 cm // NoFrost Plus // FastFreeze

#### Equipment of refrigerator

Egg/Ice bin: Egg/Ice bin: 1 x 7 // SimpleSlide height adjustable door shelves: 2 // Type of interior light: LED // 4 glass shelves // Bottle holder // Bottle shelf with fixed trap // MultiBox for butter and cheese // FreshZone drawer // CrispZone with HumidityControl: big vegetable drawer with humidity regulation

#### Equipment of freezer

3 drawers for freezing - 1 XXL SpaceBox drawer

#### Technical data

Energy consumption kWh/24h: **0,643 kWh** // Energy consumption kWh/year: **235 kWh** // Level of noise (max.): **42 dB(A)re 1 pW**  
Product dimensions (HxWxD): **185 x 60 x 64 cm**



Black  
RK 6192 EBK



Champagne  
RK 6192 EC



Juicy Orange  
RK 6192 EO



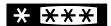
Fiery red  
RK 6192 ERD



Bordeaux  
RK 6192 ER

## RK 6192 E

### Freestanding fridge freezer



#### Colour

Black // Champagne // Juicy Orange // Fiery red // Bordeaux

Door opening: Reversible door opening // Climate class: **SN, ST, N, T**

#### Efficiency

1 compressor // Total gross/net volume: **326 / 324 l** // Capacity of cooling compartment: gross/net: **229 / 229 l** // Capacity of freezer compartment: gross/net: **97 / 95 l** // Freezing capacity in 24 hours: **4,5 kg / 24h** // Power cut safe time: **30 h**

#### Control

Mechanic control

#### Features

Slot-in: possibility to put the appliance into the kitchen niche 60 cm // FrostLess: Less ice building in the freezer

#### Equipment of refrigerator

Egg/Ice bin: 1 x 7 // SimpleSlide height adjustable door shelves: 2 // Type of interior light: LED // 4 glass shelves // Bottle holder // Bottle shelf with fixed trap // FreshZone drawer // CrispZone with HumidityControl: big vegetable drawer with humidity regulation

#### Equipment of freezer

3 drawers for freezing - 1 XXL SpaceBox drawer

#### Technical data

Energy consumption kWh/24h: **0,635 kWh** // Energy consumption kWh/year: **232 kWh** // Level of noise (max.): **40 dB(A)re 1 pW**  
Product dimensions (HxWxD): **185 x 60 x 64 cm**



Fiery red  
RK 6193 KRD



Champagne  
RK 6193 KC



Bordeaux  
RK 6193 KR



Silver  
RK 6193 KX



Black  
RK 6193 KBK

## RK 6193 K

### Freestanding fridge freezer

5  
YEAR  
WARRANTY



\* \*\* \*\* \*

#### Colour

Fiery red // Champagne // Bordeaux // Silver // Black

Door opening: Reversible door opening // Climate class: **SN, ST, N, T**

#### Efficiency

1 compressor // Total gross/net volume: **326 / 322 l** // Capacity of cooling compartment: gross/net: **229 / 227 l** // Capacity of freezer compartment: gross/net: **97 / 95 l** // Freezing capacity in 24 hours: **4,5 kg / 24h** // Power cut safe time: **30 h**

#### Control

Electronic control

#### Features

IonAir: Ionizer in the fridge // **AdaptTech** cooling: Memorizing intelligent system // Slot-in: possibility to put the appliance into the kitchen niche 60 cm // **FrostLess**: Less ice building in the freezer // **DynamiCooling** // **FastFreeze**

#### Equipment of refrigerator

Egg/Ice bin: Egg/Ice bin: 1 x 7 // SimpleSlide height adjustable door shelves: 2 // Type of interior light: LED // 4 glass shelves // Bottle holder // Bottle shelf with fixed trap // MultiBox for butter and cheese // FreshZone drawer // CrispZone with HumidityControl: big vegetable drawer with humidity regulation

#### Equipment of freezer

3 freezing drawers - 1 XXL SpaceBox drawer

#### Technical data

Energy consumption kWh/24h: **0,423 kWh** // Energy consumption kWh/year: **154 kWh** // Level of noise (max.): **40 dB(A)re 1 pW**  
Product dimensions (HxWxD): **185 x 60 x 64 cm**



Silver  
W 8543 LA



Juicy Orange  
W 8543 LO



Fiery red  
W 8543 LR



Black  
W 8543 LB

## W 8543

### Washing machine



#### Colour

Silver // Juicy Orange // Fiery red // Black

#### Efficiency

Standard collector motor // SensoCARE // Special drum construction SpaDrum  
Spin speed: **1400 rpm** // Washer load: **1-8 kg** // Drum volume: **64 l**

#### Control

LED display // Adjustable spin speed // Temperature setting // Cold wash: Button // Personal settings for all programmes

#### Programmes

**23 programmes** // Wool, Hand wash, Mix, Cotton, Quick programme, Synthetics // Prewash // Special programs: Allergycotton, Baby, Anti mites, Silent washing, Active, PerfectBlack // Ability to create own programmes: MyFavorite

#### Features

Audio signal SoftSound // Self cleaning program SterilTub // Pump STOP // Cold water connection

#### SensorIQ technology

Automatic recognition of laundry weight TotalWeight // ECOSystem

#### Safety and durability

Overflow protection // Child protection (CDP) // Stability Control (SCS) // FiberTech

#### Technical data

Energy consumption kWh/year: **192 kWh** // Annual water consumption: **10340 l** // Level of noise (max.): **73 dB(A)re 1 pW**  
Product dimensions (HxWxD): **85 x 60 x 60 cm**



Silver  
D 8565 NA



Juicy Orange  
D 8565 NO



Fiery red  
D 8565 NR



Black  
D 8565 NB

## D 8565

### Freestanding condenser tumble dryer



#### Colour

Silver // Juicy Orange // Fiery red // Black

#### Efficiency

Dryer load: 1-8 kg // IonTech technology // TwinAir // Heat pump // Drum volume: 120 l // Drum illumination with LED light // Porthole diameter: 35 cm // Door opening angle: 180 ° // Reversible drum action // Direct discharge of condensate AutoDrain

#### Control

Personal settings for all programmes // LED display

#### Programmes

15 programmes // Programmes: Cotton / Synthetics / Delicates / Mix / Wool / XL programme

#### Functions

Anticrease

#### Features

Audio signal SoftSound // FiltrationSupreme // Drying phase indicator // Signal for "full water container" // Remaining time on display // Vacuum feet

#### SensorIQ technology

Humidity sensor // Service diagnostic indicator

#### Safety and durability

Protective thermostat // Automatic switch off when door is open // Child protection (CDP) // Stainless steel inner/outer drum

#### Technical data

Noise level: **65 dB(A)**re 1 pW // Energy consumption kWh/year: **218 kWh**  
Product dimensions (HxWxD): **85 × 60 × 60 cm**

# gorenje

GORENJE UK Ltd  
Tuition House  
27-37 St George's Road  
London  
SW19 4EU

T 020 8247 39 80  
F 020 8247 39 99

E info.uk@gorenje.com  
www.gorenje.co.uk

[www.vosoughishop.com](http://www.vosoughishop.com)

دفتر مرکزی : مشهد، بین قرنی ۳۱ و ۳۳

تلفن : ۰۵۱ - ۳۷۱۳۳۰۰۰